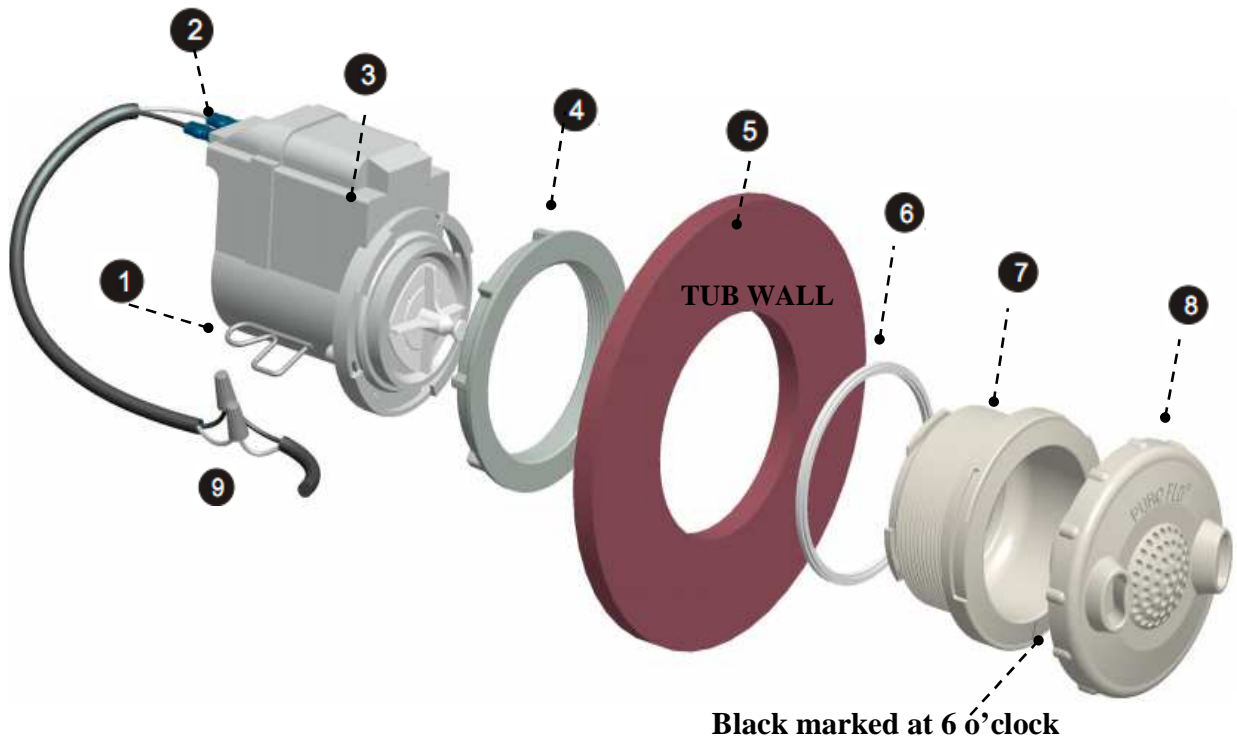


HOW TO REPLACE PURE-FLO JET & HOUSING



A. REMOVE / REPLACE MOTOR ONLY:

1. >>> **Disconnect AC power to Spa**
2. >>> **Safety precaution needed:** Loosen the plumbing connection at rear of Spa as needed and lift the front Spa off the floor by 1' or turn Spa on the side
3. Pull out Lock pin (#1)
4. Press in and turn Motor (#3) Clock-wise to remove
5. Remove Power Connections at (#2)

To install Pure-Flo Jet, reverse the above steps

B. REMOVE / REPLACE MOTOR & HOUSING:

1. Repeat the A steps above
2. Unscrew nut (#4)
3. Use Pliers to loose & push in Housing (#7)
4. Pull out Housing from inside Tub. If Rubber seal (#6) sticks on Tub wall, remove it and clean tub wall.

To install Pure-Flo Jet, reverse the above steps and install housing follow the Black marked at 6 o'clock