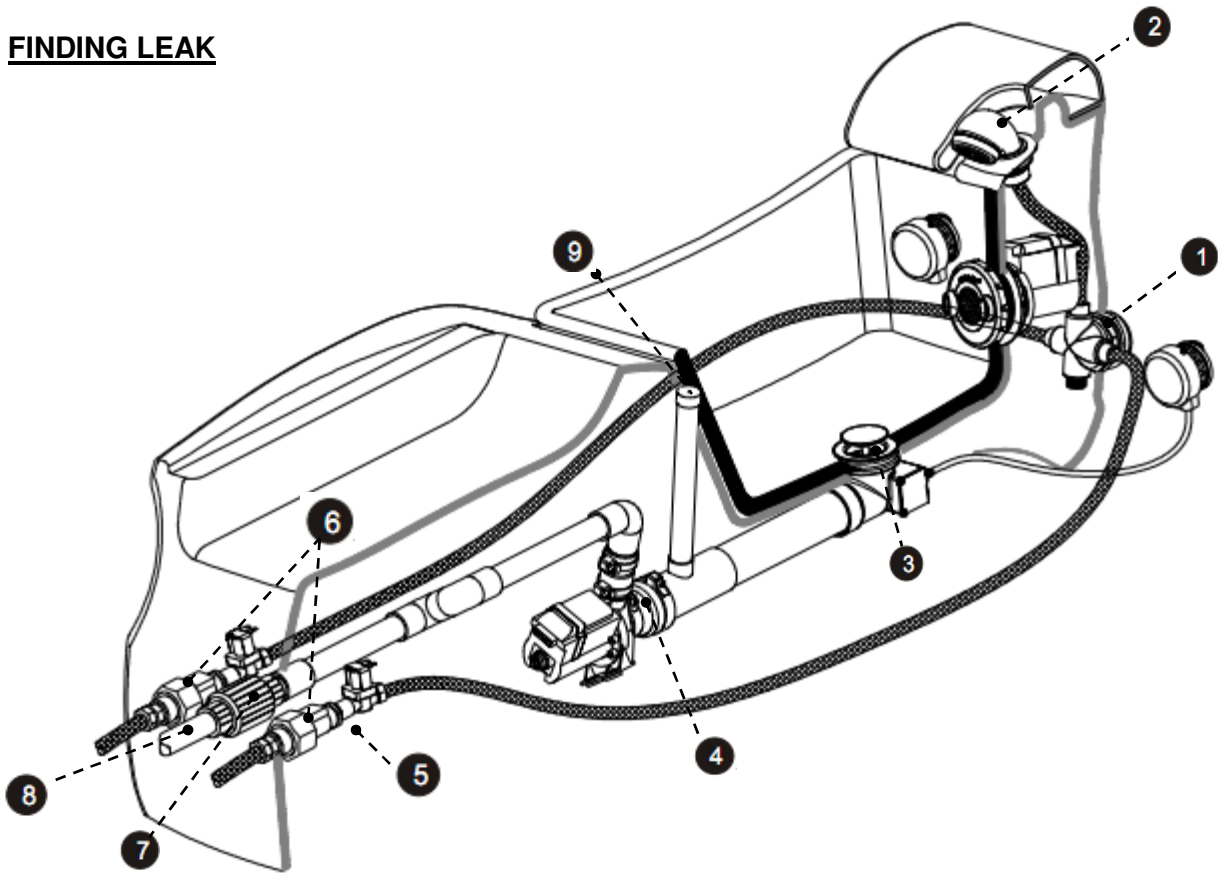


FINDING LEAK



Use a napkin to touch the areas listed below to locate the leak. Most of the leak can be fixed by tightening connections or replacing part.

- 1 **Faucet Cartridge:** Touch Hot/Cold Mixer & Slide a card-board to find wet mark
- 2 **Hand Spray:** Pull hand spray out check for loosed connection. If Spray head loosed unscrew spray head and apply nail glue on thread and screw it back.
- 3 **Drain Shoe:** Slide a card-board to find leak.
- 4 **Rubber connectors & Drain Pump:** Slide a card-board to find leak
- 5 **Solenoid connectors:** Touch to find leak
- 6 **Water inlet connections & Backflow preventer (not supplied) =** Touch to find leak
- 7 **Check Valve:** Leak caused by check valve is not lined up & not secured enough. Drain pipe must be a $\frac{3}{4}$ round flexible flat surface and glued well. Do not use flex pipe with grove on it Check both end between Spa drain and your salon drain connections before call for service.
- 8 **Drain Pipe:** Check both end at Spa end your facility's drain system
- 9 **Air Releaser:** To help Drain pump to release air lock. Couple drop of water spill out is normal

Caution: If your salon's water hoses and on/off valves have been previous used. Replace with new ones to prevent leakage and debris of broken rubber seal from these old hoses block water flow which is not covered under warranty.