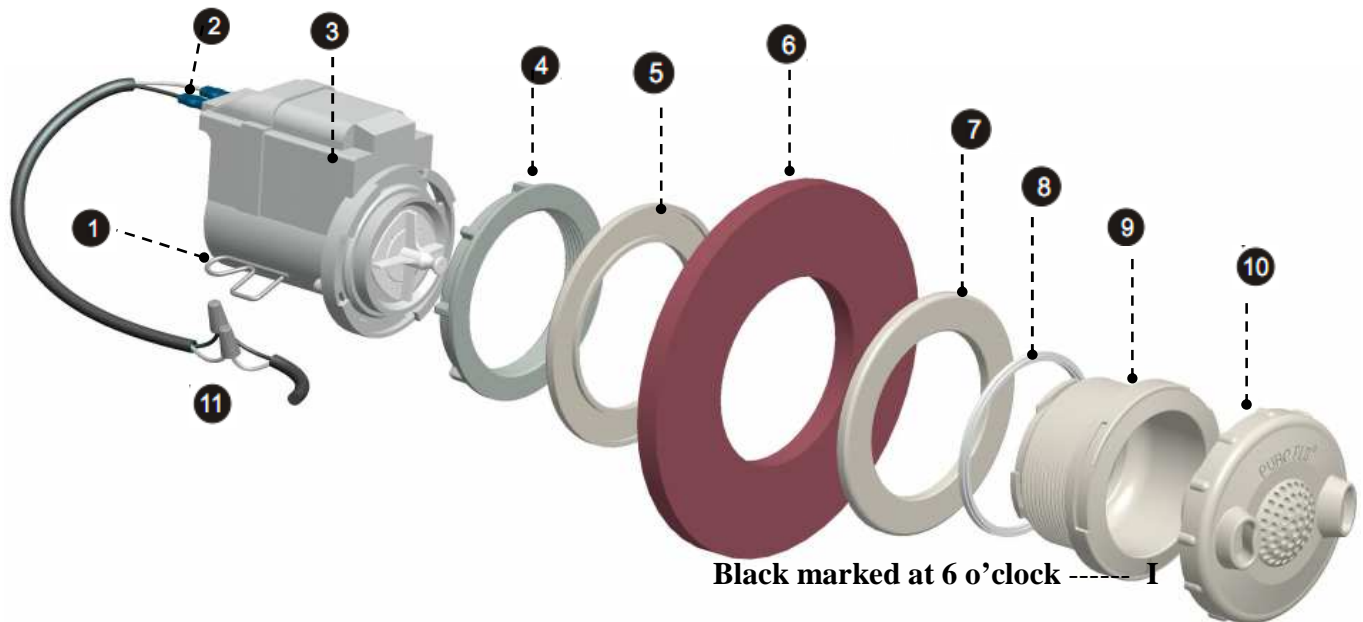


HOW TO REPLACE PURE-FLO JET (3" Diameter) WITH LARGER JET



1. **Disconnect AC power to Spa**
2. **>>> Safety precaution needed:** Loosen the plumbing connections at the rear of the spa as needed and lift the front Spa off the floor by 1' or turn the spa on its side
3. Remove your existed Jet

4. **Remove AC power before cutting your power cord as shown at (#11)**

5. **Caution:** Draw a circle on Tub Wall by using "O" ring (#5) and a pencil. This will later guide you to align the adapter ring when installing & to avoid from leaking

6. Discard/do not use the Rubber seal(#8). Apply a good amount of silicon onto Jet Housing (#9). Stick adapter ring (#7) on (#9). Wipe out all silicon residues.

7. On the back of (#7) apply a good amount of silicon and place the housing onto Tub wall. **NOTE :** Black marked on housing must be **at 6 o'clock** and follow the circle mark on the Tub wall. Silicon must cover the entire jet hole. Ask for help to keep the housing steady when installing this step as needed.

8. At the back of Tub. Gently place the second adapter ring (#5) onto Jet-housing and using mounting nut (#4) to secure the jet housing. Do not over tight, it will bend the (#7) ring. The silicon will help to hold the Jet.

9. At Jet-Motor plug in the Ac Power fast on connectors (#2) and at the other end of the cable connect AC power as show at (#11)

10. **DO NOT** fill water into tub at this time. Leave the unit overnight for silicon to dry. Check for leaking before turning on the Pureflo-Jet.

